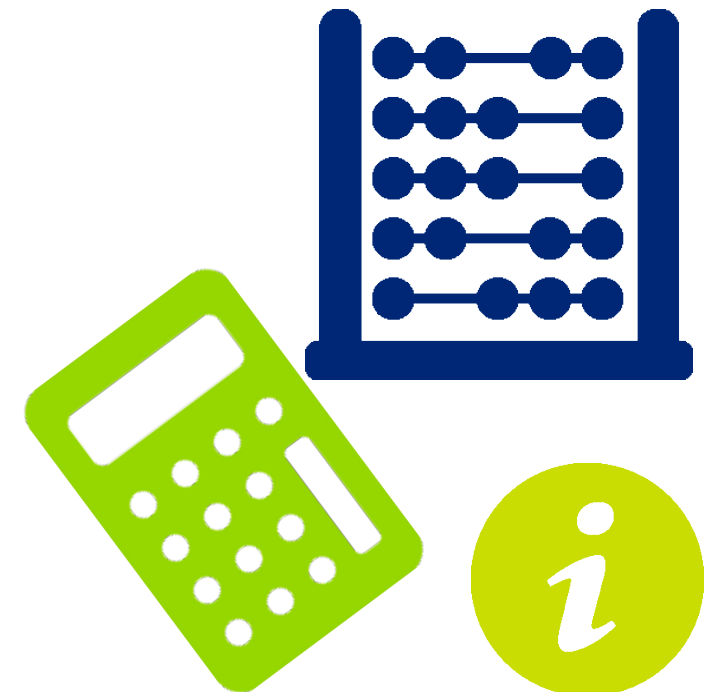


Global value of data and PSI's role in the future

Patrick Wauters and Haris Irshad



Understanding the value of data and PSI is crucial in order to shape policy around access and how it can be exploited to support growth and wellbeing

- Governments across Europe continue to generate significant amounts of data and PSI; this is either collectively **deliberately** or is generated as '**exhaust**' data from other activities
- Much of this data and PSI is now available to the general public through single-access points; but some data continues to carry user fees or is unavailable for wider use
- Given the large number of datasets they hold and can make available, Governments face choices over which to prioritise in terms of improving **quality**, reducing **access costs** and providing **user support** for
- Research has demonstrated a clear link between the provision and use/re-use of data and PSI to:
 - Stimulate **innovation** and lead to the development of **new products and services**;
 - Hold public service providers to **account**, promote **democratic engagement** and foster greater **transparency** and better **policymaking**;
 - **Reduce barriers to entry** into markets and address **information asymmetries**; and
 - Generate **network effects** to drive disruptive change and connect businesses and consumers
- To help Governments choose which datasets to focus on, it is important they understand the **current and future value of each dataset**; value in this context could include:
 - Contribution of the dataset to **GDP** and the number of **jobs** supported
 - Broader contributions to **innovation, productivity, competition, skills and enabling infrastructure**

The value of any PSI dataset is a function of both its content and quality, and also the different ways it can be used today and tomorrow

Supply side



Demand side

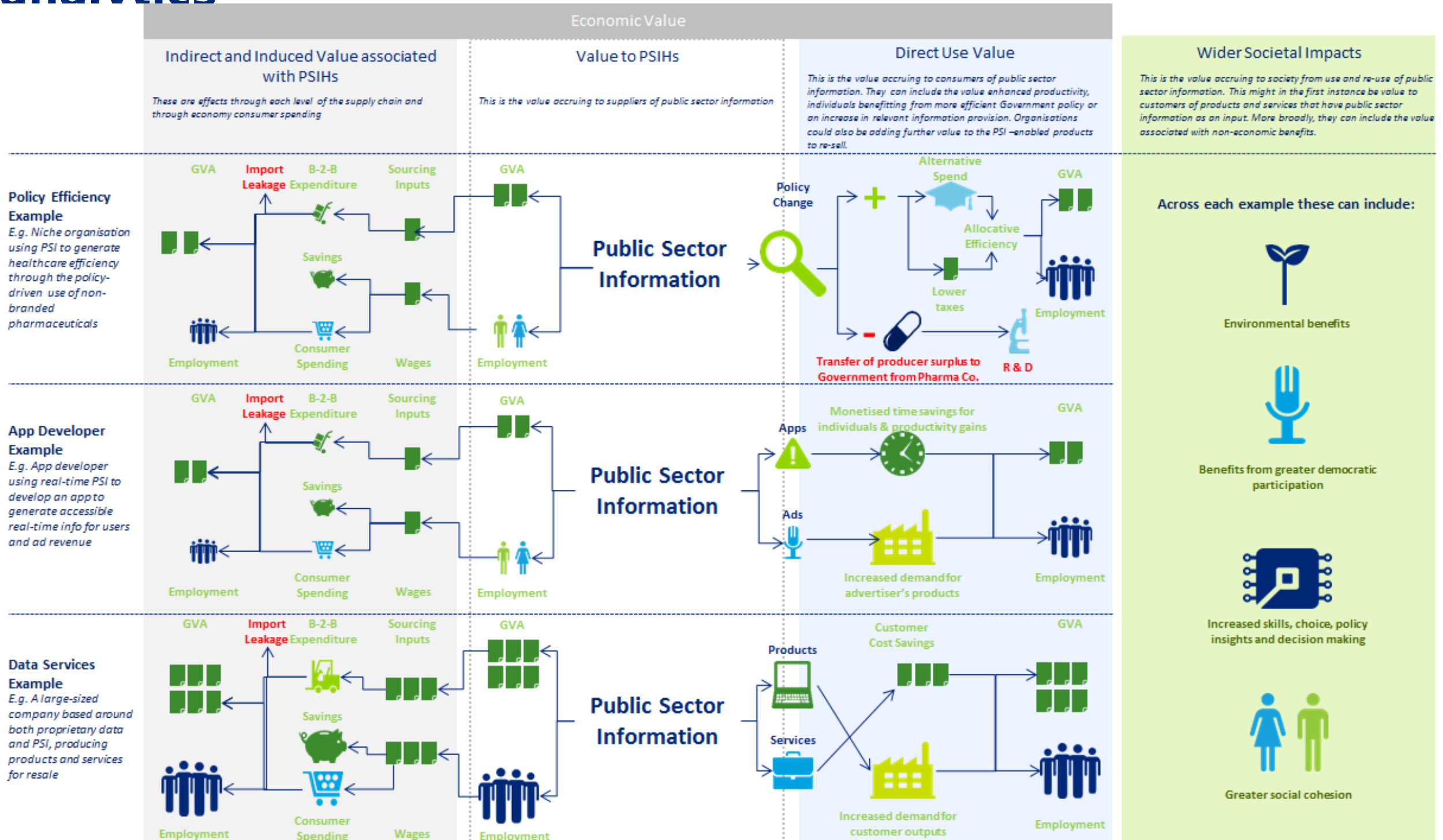


Demand and supply side combine to generate different types of value

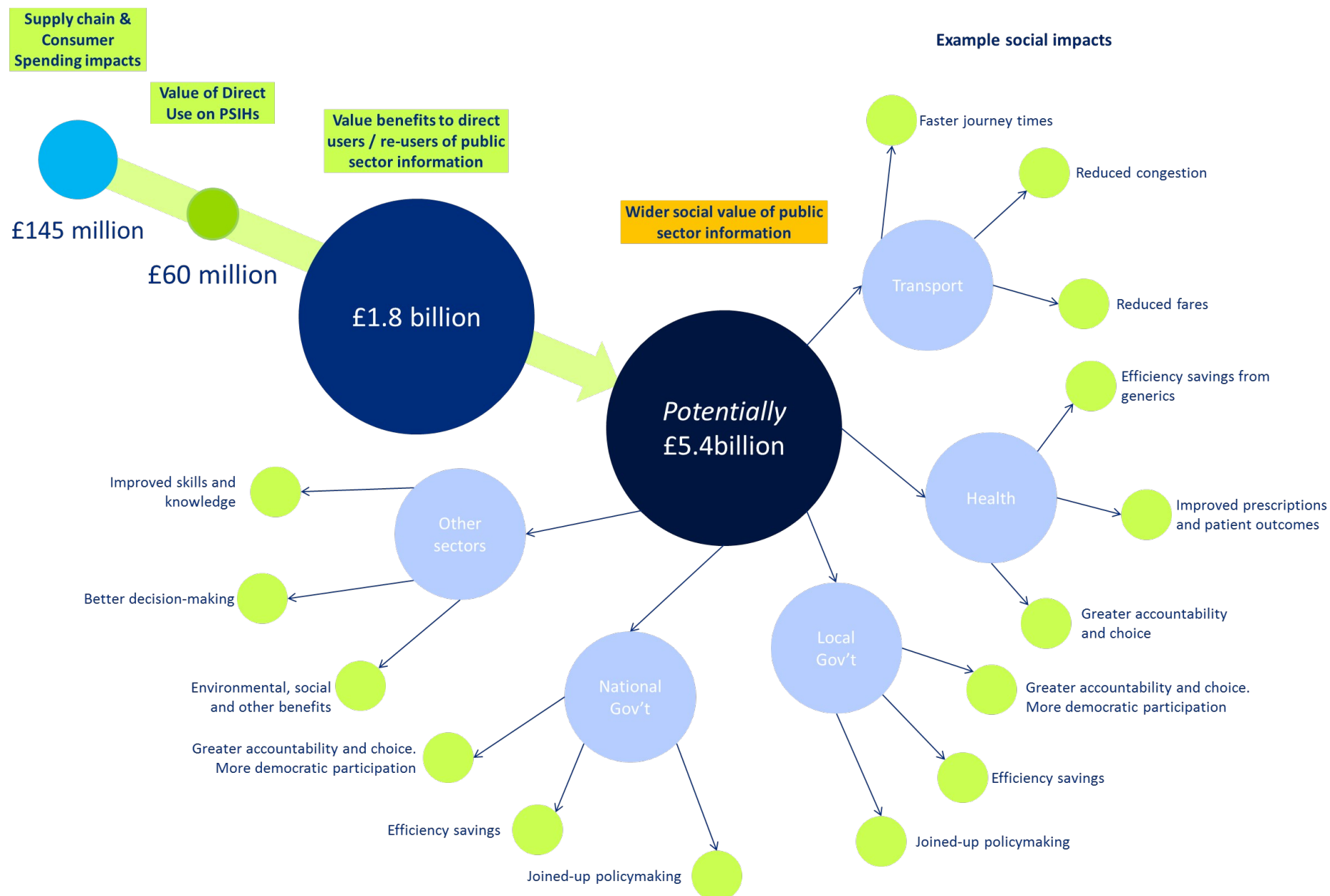
Data and PSI value



The value of PSI can be seen in the examples of its use and re-use in public policy, app development and data analytics



Deloitte estimated the current value of PSI in the UK is £1.8 billion with at least an additional £5.4 billion available through better data quality and exploitation



- Other studies have estimated the value at EU-level:
- The MEPSIR study¹ estimated the overall market for PSI in the EU + Norway as €26.1 billion with an upper bound of €47.8 billion
- The Vickery study² estimated the value of the PSI market across the EU27 as €32 billion in 2010

¹ Measuring European Public Sector Information Resources (2006)

² Review of recent studies on PSI re-use and related market developments (2011)

Thinking about your experience of PSI, consider the following

- Which PSI datasets do you think have the most **value**? Why?
- What sorts of wider **societal value** do you think they can generate?
- Do you have an understanding of **how individuals and the private sector use PSI**? What methods do you have of **tracking** use and re-use?
- How might the **quality** of your PSI be improved?
- Do users and potential users have the right **skills** to fully exploit PSI value?
- What are currently the most important **obstacles** to the use and re-use of PSI?
- What needs to be done to ensure the forthcoming **PSI guidelines of the European Commission** significantly contribute to overcoming these obstacles?
- What other **policy steps** could be taken to minimise the gap between actual and potential value of PSI?

Deloitte.

This is an internal document which provides confidential advice and guidance to partners and staff of Deloitte MCS Limited. It is not to be copied or made available to any other party.

© 2014 Deloitte MCS Limited. All rights reserved.